

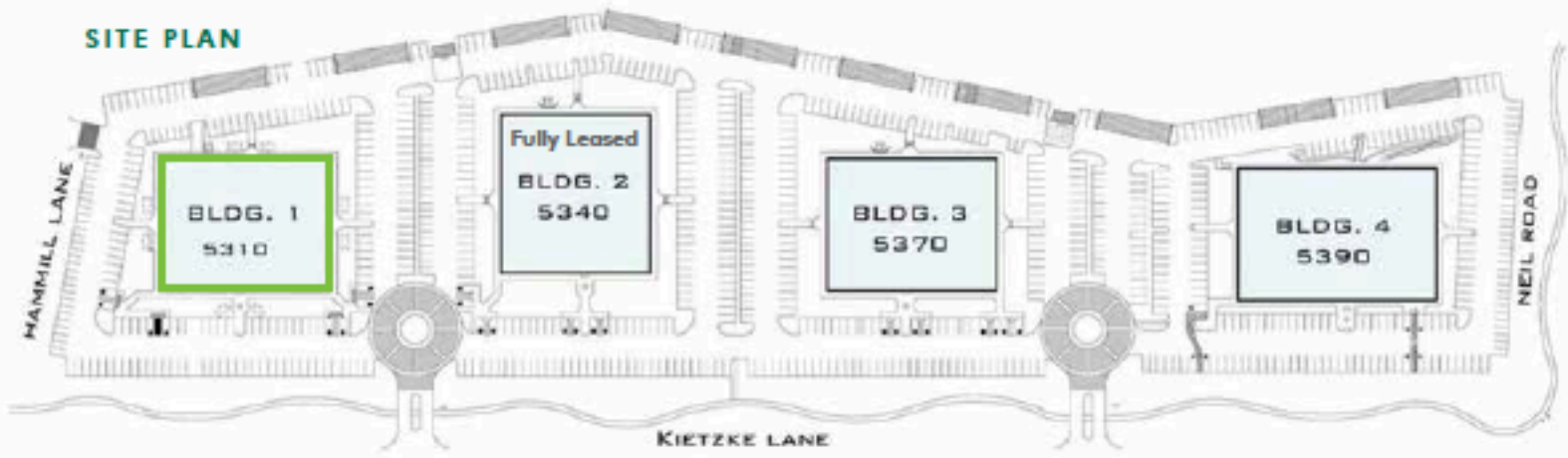
FOR
LEASE



**NEVDEX
OFFICE PARK**
RENO, NEVADA 89502

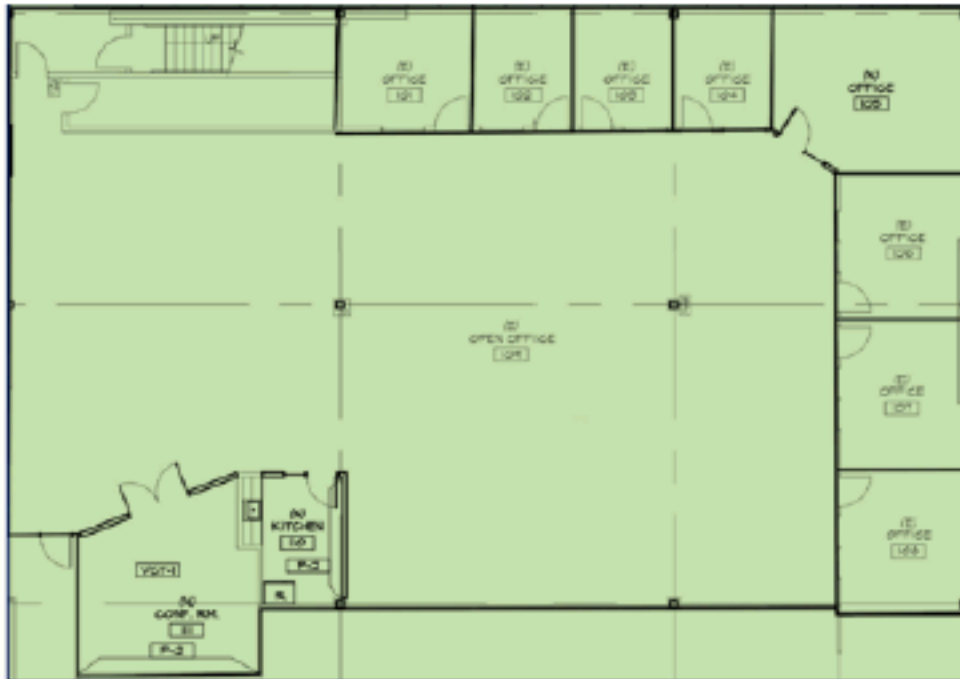
www.cbre.com/reno

SITE PLAN



SUITE 104:

BUILDING 1
5310 Kietzke Lane
Available: Ste. 104
±6,183 SF



8 offices, conference room, kitchen, large open space

NOT TO SCALE -- ALL DIMENSIONS ARE APPROXIMATE.

