

887 TRADEMARK | RENO, NV 89521



LEED GOLD CLASS A OFFICE BUILDING

DAVID WOODS, CCIM
+1 775 321 4459
david.woods@cbre.com
www.cbre.com/david.woods

MATT GRIMES, CCIM
+1 775 356 6290
matt.grimes@cbre.com
www.cbre.com/matt.grimes

CBRE

NevDex
PROPERTIES

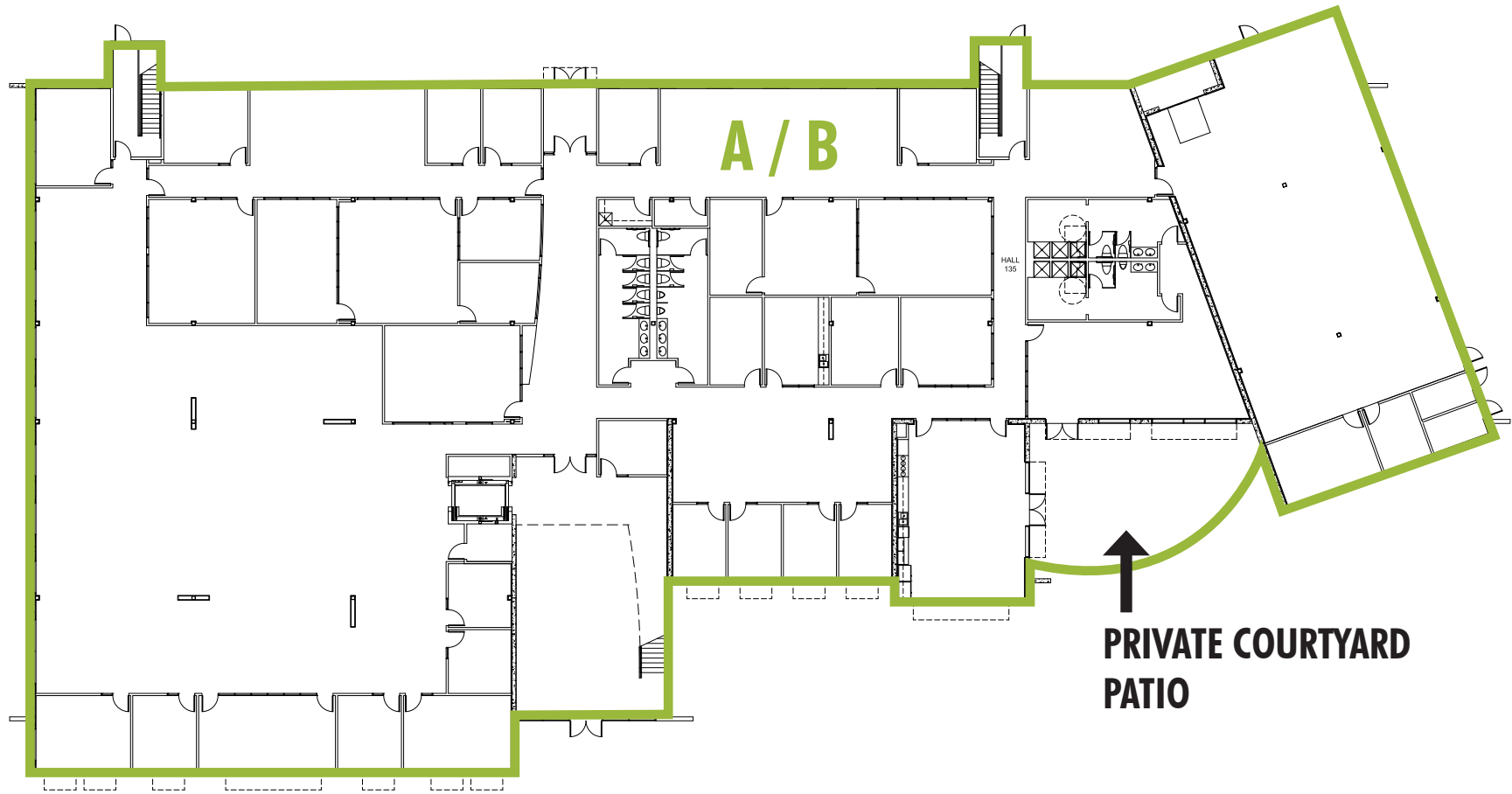
887 TRADEMARK | RENO, NV 89521



OVERVIEW / HIGHLIGHTS

- + 53,437 SF Class A Office Building
- + LEED Gold Certified
 - LEED certified buildings save money and resources and have a positive impact on the health of occupants, while promoting renewable, clean energy.
<http://www.usgbc.org/leed>
- + Two-story office building
- + Multiple Tech Labs
- + Data Center spaces
- + Significant technology infrastructure
- + Building signage
- + Open floor plan
- + Modern finishes
- + 1 back up generator
- + Elevator served
- + Motion sensor lights throughout building
- + Solar on the roof
- + Build in 2010

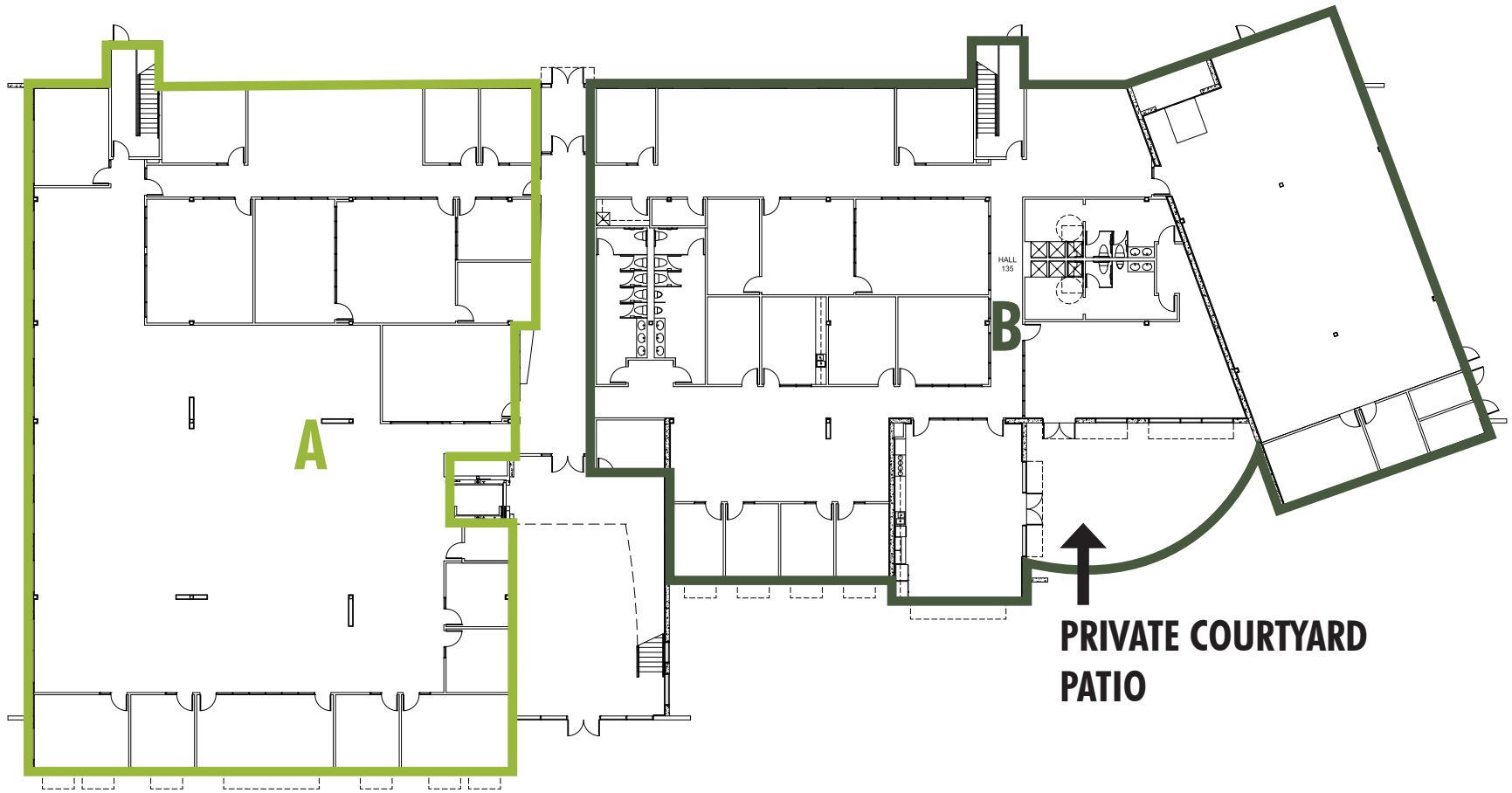
887 TRADEMARK | RENO, NV 89521



A & B = $\pm 26,871$ SF
(DIVISIBLE TO 4,000 SF)

FIRST FLOOR PLAN (NOT TO SCALE)

887 TRADEMARK | RENO, NV 89521



A = ±13,703 SF

B = ±13,168 SF

**PRIVATE COURTYARD
PATIO**

*Free flowing modern office
space with private courtyard,
high open ceilings.*

FIRST FLOOR PLAN (NOT TO SCALE)

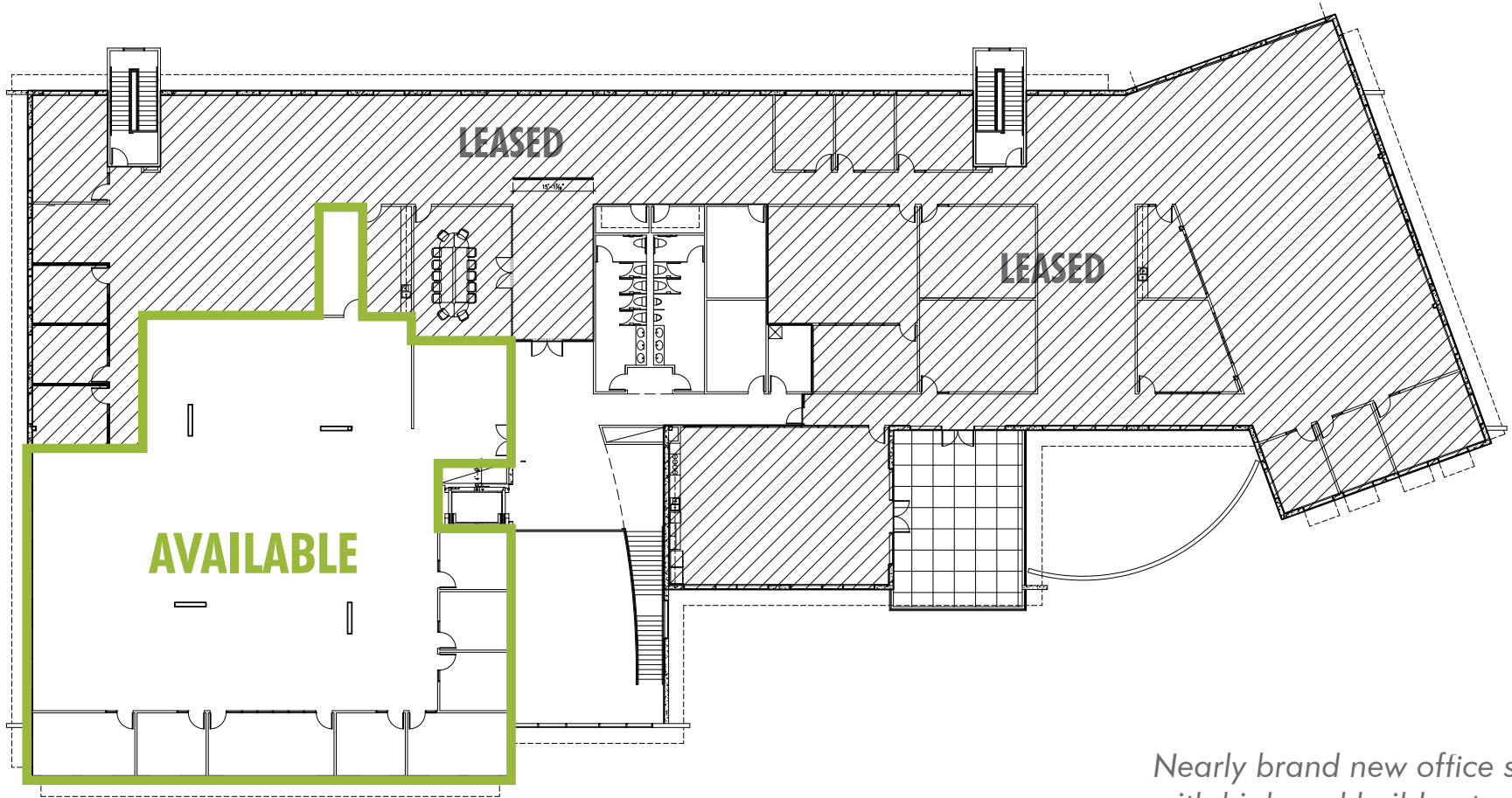
887 TRADEMARK | RENO, NV 89521



HYPOTHETICAL
± 13,703 SF AVAILABLE

FIRST FLOOR PLAN (NOT TO SCALE)

887 TRADEMARK | RENO, NV 89521



±8,203 SF AVAILABLE

SECOND FLOOR PLAN (NOT TO SCALE)

Nearly brand new office space, with high-end build-out throughout. Excellent views of Mt. Rose and the surrounding Sierra Nevada mountain range.

887 TRADEMARK | RENO, NV 89521



HYPOTHETICAL
±8,203 SF AVAILABLE

SECOND FLOOR PLAN (NOT TO SCALE)

887 TRADEMARK | RENO, NV 89521

NEVDex PROPERTIES PORTFOLIO



NEVDex

NevDex Properties is Reno's premier landlord for Class A office space. We develop, own and manage approximately 415,000 rentable square feet in Reno, Nevada, including the NevDex Office Park. By providing creative deal structures with flexible lease terms, expansion rights, and landlord sponsored improvement dollars, we offer the most professional and flexible leasing solutions that can help you thrive in today's rapidly changing work environment.

LOCATION

- + Prime South Reno Location (South Meadows)
- + Located near I-580, South Virginia Street, Double R Blvd. and South Meadows Pkwy.
- + Close proximity to restaurants, retail, office and industrial parks along with residential neighborhoods

©2015 CBRE, Inc. The information contained in this document has been obtained from sources believed reliable. While CBRE, Inc. does not doubt its accuracy, CBRE, Inc. has not verified it and makes no guarantee, warranty or representation about it. It is your responsibility to independently confirm its accuracy and completeness. Any projections, opinions, assumptions or estimates used are for example only and do not represent the current or future performance of the property. The value of this transaction to you depends on tax and other factors which should be evaluated by your tax, financial and legal advisors. You and your advisors should conduct a careful, independent investigation of the property to determine to your satisfaction the suitability of the property for your needs. CBRE and the CBRE logo are service marks of CBRE, Inc. and/or its affiliated or related companies in the United States and other countries. All other marks displayed on this document are the property of their respective owners. Photos herein are the property of their respective owners and use of these images without the express written consent of the owner is prohibited. 81208158 - PN131059

Photos herein are the property of their respective owners and use of these images without the express written consent of the owner is prohibited.

887 TRADEMARK | RENO, NV 89521

AMENITIES



DAVID WOODS, CCIM
+1 775 321 4459
david.woods@cbre.com
www.cbre.com/david.woods

MATT GRIMES, CCIM
+1 775 356 6290
matt.grimes@cbre.com
www.cbre.com/matt.grimes

CBRE

NevDex
PROPERTIES